

th



sh

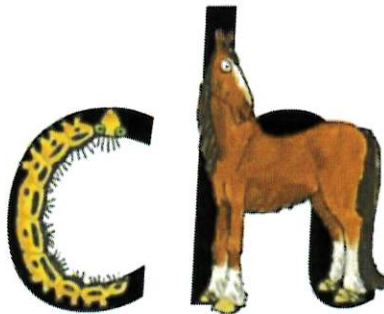


thing on a string

ng



nk



ch

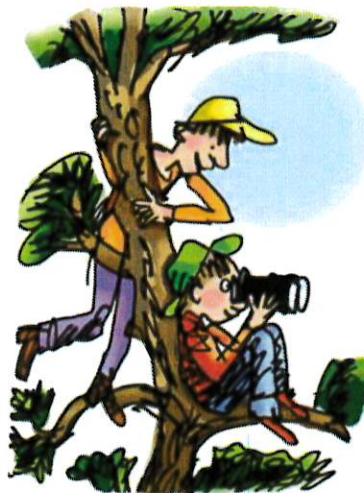


qu



may I play?

ay



what can you see?

ee



fly high

igh





poo at the zoo

oo



look at a book

oo



start the car

ar



shut the door

or



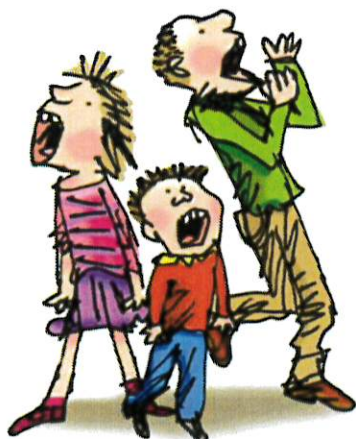
that's not fair

air



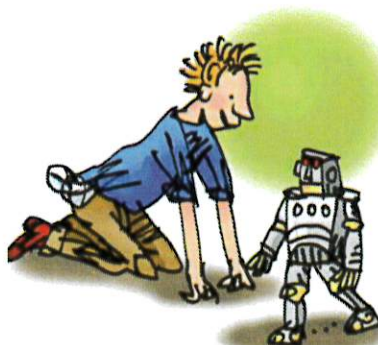
whirl and twirl

ir



shout it out

ou



toy for a boy

oy



cup of tea

ea





make a cake

a-e



phone home

o-e



huge brute

u-e



yawn at dawn

aw



nurse with a purse

ur



brown cow

ow



care and share

are



goat in a boat

oa



a better letter

er





fire! fire!

ire



chew the stew

ew



hear with your ear

ear



spoil the boy

oi



ure



pay attention  
it's a celebration

tion

tion



scrumptious  
delicious

cious  
tious

cious



come to the rescue!

ue



terrible tie!

ie





go Pete and Steve!

e-e



knock knock, who's there?

kn



tick tock clock

ck



whisk, whisk

wh



take a photo

ph

## Set 1 Special Friends

th  
sh  
ng  
nk  
ch  
qu

## Set 2

ay  
ee  
igh  
ow  
oo  
oo  
ar  
or  
air  
ir  
ou  
oy

## Set 3

ea	er
i-e	ai
a-e	ire
o-e	ew
u-e	ear
aw	oi
ur	ure
ow	tion
are	cious
oa	

## Additional Sounds

ue  
ie  
au  
e-e  
kn  
ck  
wh  
ph